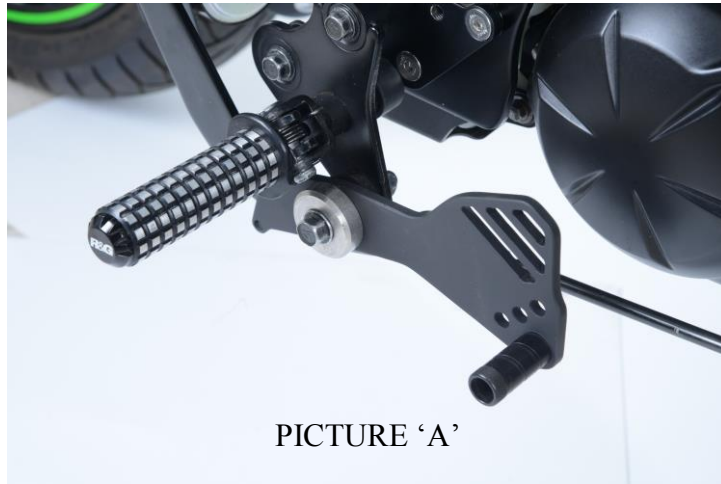




FITTING INSTRUCTIONS FOR HEELSH0001 HEEL SHIFT BRACKET
KAWASAKI VULCAN 'S' 2015-



PICTURE 'A'

THIS KIT CONTAINS THE ITEMS PICTURED AND LABELLED BELOW.
DO NOT PROCEED UNTIL YOU ARE SURE ALL PARTS ARE PRESENT.

Please note that the way the kit is packed does not necessarily represent the way of mounting to the bike

Please note that in cases where kits are packed with rubber washers holding the components onto the bolt – *the rubber washers should be thrown away!*

THE PARTS SHOWN MAY BE REPRESENTATIVE ONLY (FOR CLARITY OF INSTRUCTIONS ONLY)

Digital copies of these instructions are available to download from www.rg-racing.com

GENERAL TORQUE SETTINGS

M4 BOLT = 8Nm
M5 BOLT = 12Nm
M6 BOLT = 15Nm
M8 BOLT = 20Nm
M10 BOLT = 40Nm

TOOLS REQUIRED

- Set of metric Allen keys to include 5mm A/F.
 - 2x 14mm Spanners.

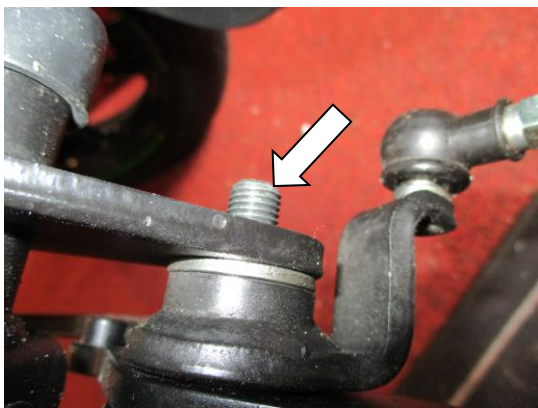
R&G

Unit 1 Shelleys Lane, East Worldham, Alton, Hants GU34 3AQ
Tel: +44 (0)1420 89007 Fax: +44 (0)1420 87301 www.rg-racing.com Email: info@rg-racing.com

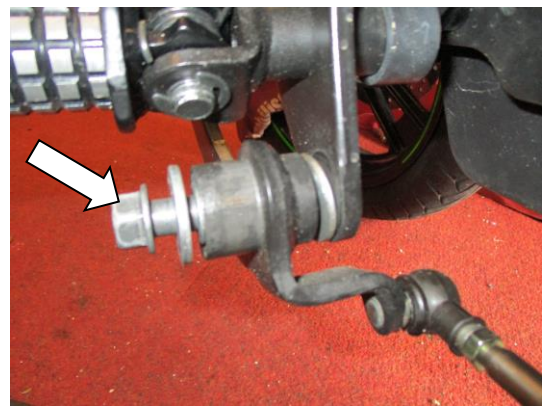


LEGEND

- ITEM 1 = SPACER (S0921) (x1)
- ITEM 2 = HEEL SHIFT BRACKET (PLATE 0201) (x1)
- ITEM 3 = TOE-PEG SLIDER (PT0001) (x1)
- ITEM 4 = M6 WASHER 12mm OD (x1)
- ITEM 5 = M6 x 16mm LONG BUTTON HEAD BOLT (x1)



PICTURE 1



PICTURE 2

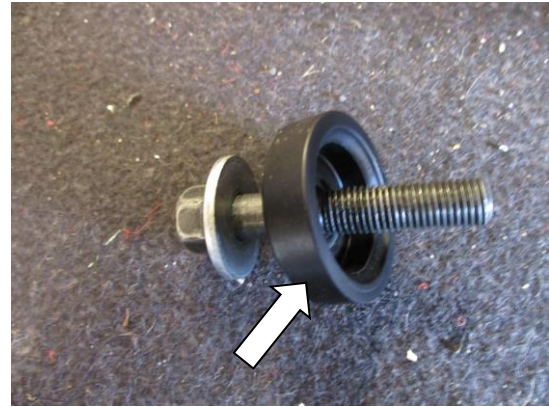
R&G



HEELSH0001



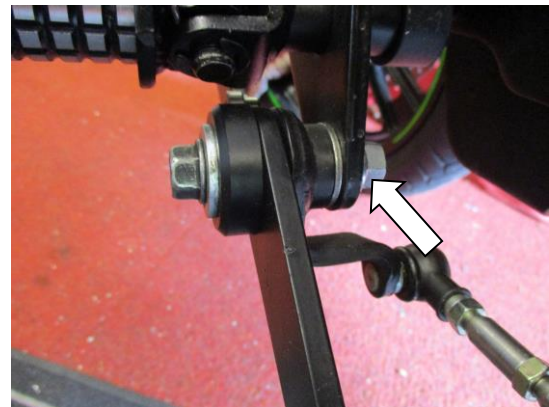
PICTURE 3



PICTURE 4



PICTURE 5



PICTURE 6



PICTURE 7

R&G

Unit 1 Shelleys Lane, East Worldham, Alton, Hants GU34 3AQ

Tel: +44 (0)1420 89007 Fax: +44 (0)1420 87301 www.rg-racing.com Email: info@rg-racing.com



FITTING INSTRUCTIONS

- From the kit take the toe-peg slider (Item 3) and heel shift bracket (item 2). Locate the toe-peg slider (item 3) onto the desired mounting hole of the heel shift bracket (item 2) as shown in exploded diagram. Secure the toe-peg slider with an M6 bolt (item 5) and M6 washer (Item 4) as shown in the exploded diagram, Tighten to a recommended torque setting.

Page | 4

Near side (left side as you sit on bike)

- Remove the nut arrowed in picture 1.
- Remove the bolt arrowed in picture 2.
- Place the heel shift bracket (item 2) over the original shift bracket so the pins locate on both side of the bracket as shown in pictures 3 and 7.
- Place the spacer (item 1) over the original shift bracket's boss, secure using the original bolt as shown in picture 4.
- Offer the assembly onto the motorcycle and tighten the bolt as shown in picture 5 (please ensure the lever operates correctly).
- Fit and tighten the original nut as shown in picture 6.
- Tighten all bolts and nuts, check operation before riding. You may have to loosen the main bolt to allow correct operation and re-tighten the lock nut.
- Please tighten all nuts and bolts and check operation before use.

ISSUE 2 03/01/2017 (HH)

CONSUMER NOTICE

The catalogue description and any exhibition of samples are only broad indications of the Products and R&G may make design changes which do not diminish their performance or visual appeal and supplying them in such state shall conform to the order. The Buyer acknowledges no representation or warranty (other than as to title) has been given or will apply to the Products other than those in R&G's order or confirmation and the Buyer confirms it has chosen the Products as being of merchantable quality and suitable for its particular purposes. Where R&G fits the Products or undertakes other services it shall exercise reasonable skill and care and rectify any fault free of charge unless the workmanship has been disturbed. The Buyer is responsible for ensuring that the warranty on the motorcycle is not affected by the fitting of the Products. On return of any defective Products R&G shall at its option either supply a replacement or refund the purchase money but shall not be liable if the Products have been modified or used or maintained otherwise than in accordance with R&G's or manufacturer's instructions and good engineering practice or if the defect arises from accident or neglect. Other than identified above and subject to R&G not limiting its liability for causing death and personal injury, it shall not be liable for indirect or consequential loss and otherwise its liability shall be limited to the amounts paid by the Buyer for the Products or the fitting or service concerned. These terms do not affect the Buyer's statutory rights.

R&G RETURNS POLICY (NON-FAULTY GOODS)

Returns must be pre-authorized (if not pre-authorized the return will be rejected). Goods may only be returned direct to us if they were purchased direct from us (customer must prove if necessary). Otherwise to be returned to original vendor. Goods must be in re-sellable condition, in the opinion of R&G. All returns are subject to a 25% restocking and handling fee (25% of the gross value exc. P&P – at the prevailing price at time of purchase). The customer must pay any and all carriage charges. No returns of discontinued products, unless within 14 days of purchase. This policy does not affect your statutory rights and does not refer to faulty goods.

R&G

Unit 1 Shelleys Lane, East Worldham, Alton, Hants GU34 3AQ

Tel: +44 (0)1420 89007 Fax: +44 (0)1420 87301 www.rg-racing.com Email: info@rg-racing.com



NOTICE DE MONTAGE POUR HEELSH0001 SUPPORT TALON
KAWASAKI VULCAN 'S' 2015-

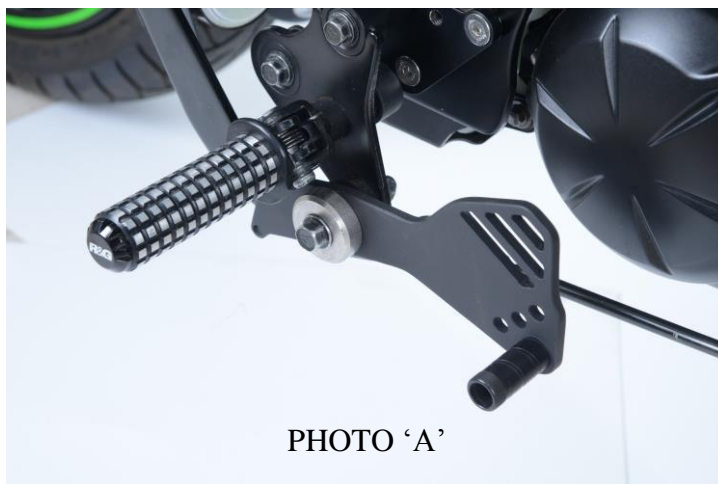


PHOTO 'A'

Le kit contient les articles exposés ci-dessous, vérifier que toutes les pièces soient présentes avant de procéder au montage.

La façon dont le kit est emballé ne correspond pas forcément à la façon de monter les pièces sur la moto

Notez que si les kits sont emballés avec des rondelles en caoutchouc servant à tenir les composants, *ces rondelles doivent être jetées !*

**LES PARTIES PRÉSENTÉES PEUVENT ÊTRE UNIQUEMENT REPRESENTATIVES (POUR LA CLARTE
DES INSTRUCTIONS UNIQUEMENT**

Notice disponible au téléchargement sur www.rg-racing.com

VALEURS DE SERRAGE RECOMMANDÉES

M4 BOULON = 8Nm
M5 BOULON = 12Nm
M6 BOULON = 15Nm
M8 BOULON = 20Nm
M10 BOULON = 40Nm

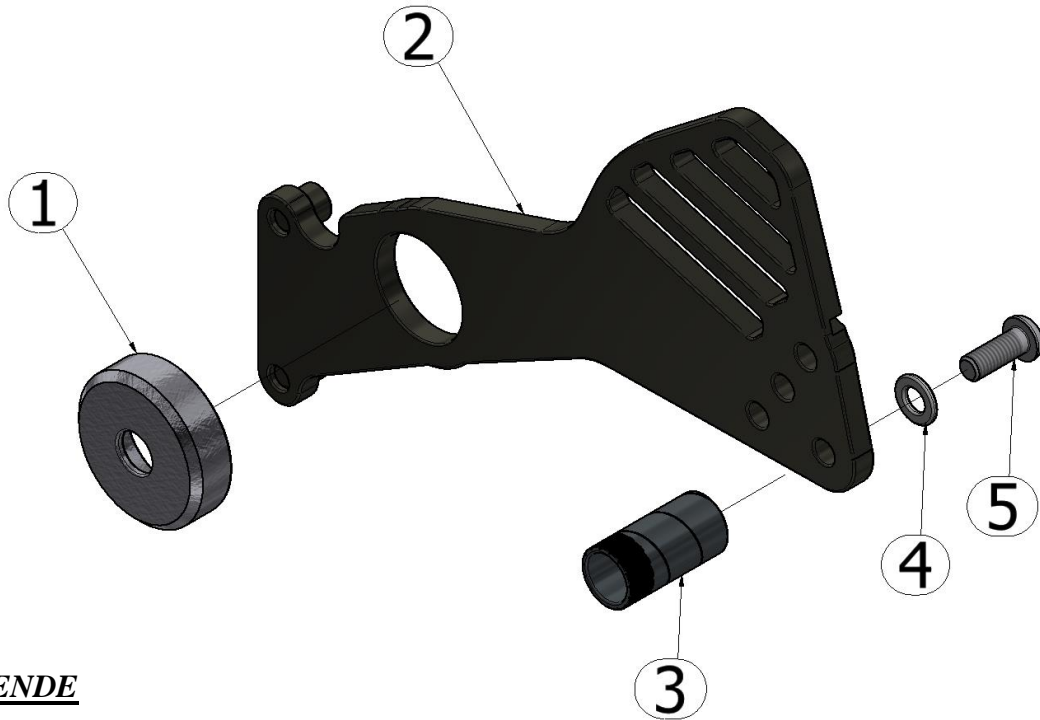
OUTILS REQUIS

- Clés Allen 5mm A/F.
- Clé à molette 2x 14mm.

R&G



HEELSH0001



LÉGENDE

- ARTICLE 1 = ENTRETOISE (S0921) (x1)
- ARTICLE 2 = SUPPORT TALON (PLAQUE 0201) (x1)
- ARTICLE 3 = SLIDER (PT0001) (x1)
- ARTICLE 4 = M6 RONDELLE 12mm (x1)
- ARTICLE 5 = M6 x 16mm BOULON (x1)

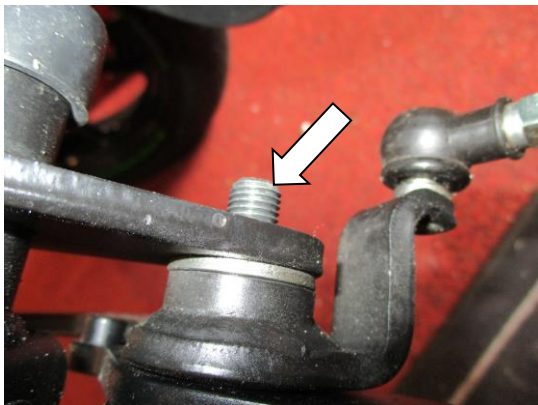


PHOTO 1

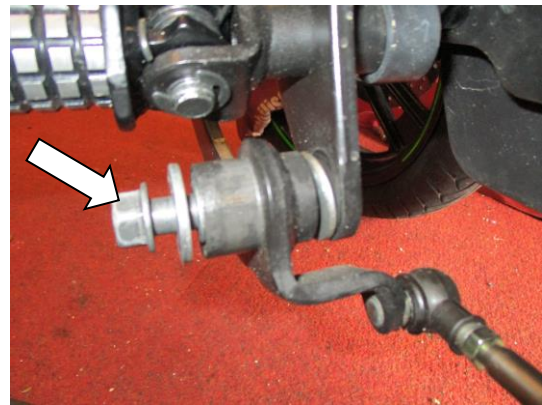


PHOTO 2

R&G



HEELSH0001



PHOTO 3

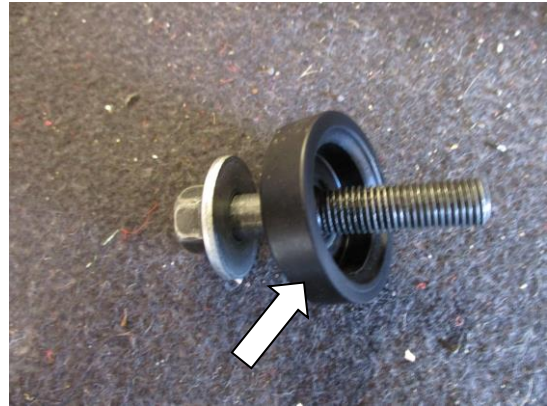


PHOTO 4



PHOTO 5

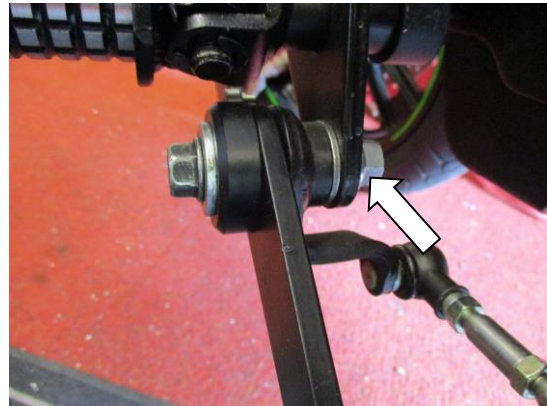


PHOTO 6



PHOTO 7

R&G

Unit 1 Shelleys Lane, East Worldham, Alton, Hants GU34 3AQ

Tel: +44 (0)1420 89007 Fax: +44 (0)1420 87301 www.rg-racing.com Email: info@rg-racing.com



NOTICE DE MONTAGE

Page | 8

- Prendre le slider de repose talon fourni (Article 3) et le support talon (article 2). Placer le slider de repose talon (article 3) sur le trou de fixation désiré du support de repose talon (article 2), voir le schéma présenté. Fixer le slider de repose talon avec un boulon M6 (article 5) et la rondelles M6 (Article 4) voir le schéma présenté. Serrer selon les valeurs de serrage recommandées.

Côté gauche (lorsqu'on est assis sur la moto)

- Enlever l'écrou, voir photo 1.
- Enlever le boulon, voir photo 2.
- Placer le support talon (article 2) sur le support d'origine de façon à ce que la broche se place des 2 côtés du support, voir photos 3 et 7.
- Place l'entretoise (article 1) sur le trou de support d'origine, puis fixer en utilisant le boulon d'origine, voir photo 4.
- Monter l'ensemble sur la moto puis serrer le boulon, voir photo 5 (veiller à ce que le levier fonctionne correctement).
- Insérer puis serrer l'écrou d'origine, voir photo 6.
- Serrer tous les boulons et écrous, puis vérifier le fonctionnement avant de prendre la route. Vous pourriez avoir besoin de desserrer le boulon principal pour permettre un fonctionnement correct et de resserrer l'écrou de blocage.
- Serrer tous les écrou et boulon, puis vérifier le fonctionnement avant de prendre la route.

ISSUE 2 03/01/2017 (HH)

CONSUMER NOTICE

The catalogue description and any exhibition of samples are only broad indications of the Products and R&G may make design changes which do not diminish their performance or visual appeal and supplying them in such state shall conform to the order. The Buyer acknowledges no representation or warranty (other than as to title) has been given or will apply to the Products other than those in R&G's order or confirmation and the Buyer confirms it has chosen the Products as being of merchantable quality and suitable for its particular purposes. Where R&G fits the Products or undertakes other services it shall exercise reasonable skill and care and rectify any fault free of charge unless the workmanship has been disturbed. The Buyer is responsible for ensuring that the warranty on the motorcycle is not affected by the fitting of the Products. On return of any defective Products R&G shall at its option either supply a replacement or refund the purchase money but shall not be liable if the Products have been modified or used or maintained otherwise than in accordance with R&G's or manufacturer's instructions and good engineering practice or if the defect arises from accident or neglect. Other than identified above and subject to R&G not limiting its liability for causing death and personal injury, it shall not be liable for indirect or consequential loss and otherwise its liability shall be limited to the amounts paid by the Buyer for the Products or the fitting or service concerned. These terms do not affect the Buyer's statutory rights.

R&G RETURNS POLICY (NON-FAULTY GOODS)

Returns must be pre-authorized (if not pre-authorized the return will be rejected). Goods may only be returned direct to us if they were purchased direct from us (customer must prove if necessary). Otherwise to be returned to original vendor. Goods must be in re-sellable condition, in the opinion of R&G. All returns are subject to a 25% restocking and handling fee (25% of the gross value exc. P&P – at the prevailing price at time of purchase). The customer must pay any and all carriage charges. No returns of discontinued products, unless within 14 days of purchase. This policy does not affect your statutory rights and does not refer to faulty goods.

R&G

Unit 1 Shelleys Lane, East Worldham, Alton, Hants GU34 3AQ

Tel: +44 (0)1420 89007 Fax: +44 (0)1420 87301 www.rg-racing.com Email: info@rg-racing.com



HEELSH0001

MONTAGEANLEITUNG FÜR HEELSH0001 SCHALTWIPPE
KAWASAKI VULCAN 'S' 2015-



ABBILDUNG 'A'

ALLE KIT-TEILE SIND UNTEN ABGEBILDET UND GEKENNZEICHNET. BEVOR SIE MIT DER MONTAGE BEGINNEN, ÜBERPRÜFEN SIE, DASS ALLE TEILE VORHANDEN SIND.

Hinweis: Die Verpackung der Teile stellt nicht die Reihenfolge der Montage dar.

Hinweis für Kits mit Plastikunterlegscheiben an den Schrauben – *Diese Plastikunterlegscheiben werden nicht für den Einbau benötigt!*

DIE UNTEN ABGEBILDETEN TEILE DIENEN LEDIGLICH ZUR ERKLÄRUNG

Eine digitale Version dieser Montageanleitung kann auf folgender Seite heruntergeladen werden:

www.rg-racing.com

MAXIMALE ANZUGSDREHMOMENTE:

- M4 SCHRAUBE = 8Nm
- M5 SCHRAUBE = 12Nm
- M6 SCHRAUBE = 15Nm
- M8 SCHRAUBE = 20Nm
- M10 SCHRAUBE = 40Nm

SIE BENÖTIGEN FOLGENDES WERKZEUG

- Satz Inbusschlüssel inkl. 5mm A/F Inbusschlüssel
- 2 x 14mm Schraubenschlüssel

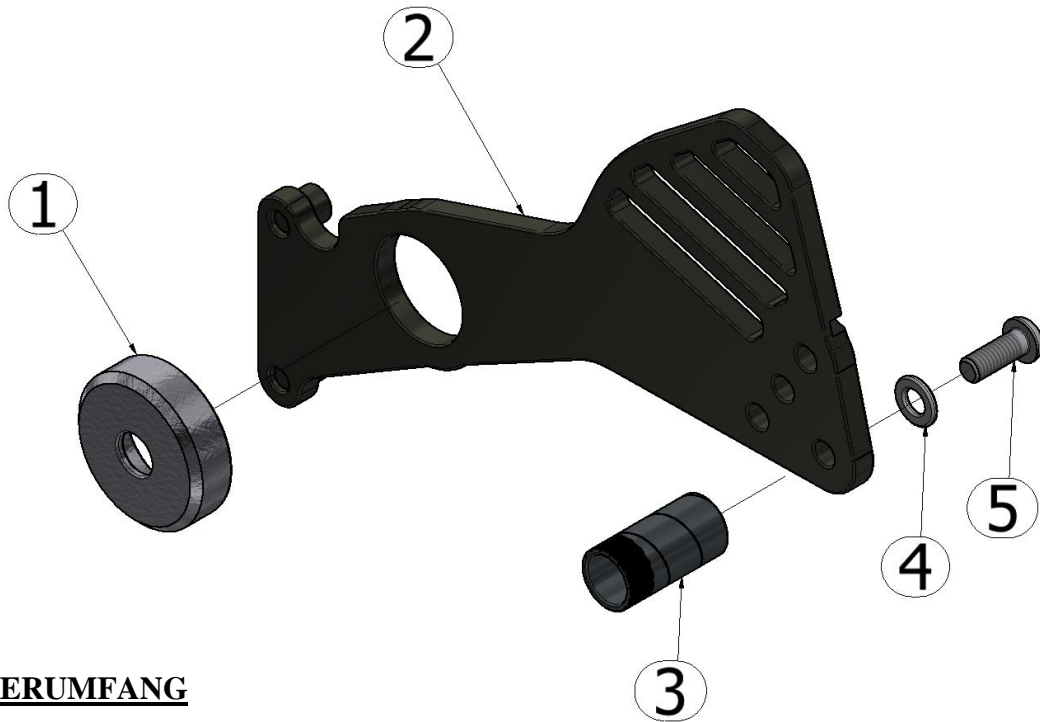
R&G

Unit 1 Shelleys Lane, East Worldham, Alton, Hants GU34 3AQ

Tel: +44 (0)1420 89007 Fax: +44 (0)1420 87301 www.rg-racing.com Email: info@rg-racing.com



HEELSH0001



LIEFERUMFANG

- ARTIKEL 1 = DISTANZHALTER (S0921) (x1)
- ARTIKEL 2 = HALTEPLATTE (PLATE 0201) (x1)
- ARTIKEL 3 = AUFTRETER (PT0001) (x1)
- ARTIKEL 4 = M6 UNTERLEGSCHIEBE 12mm OD (x1)
- ARTIKEL 5 = M6 x 16mm INBUSSCHRAUBE (x1)

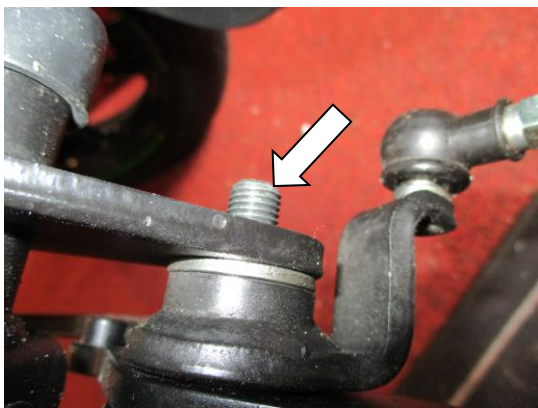


ABBILDUNG 1

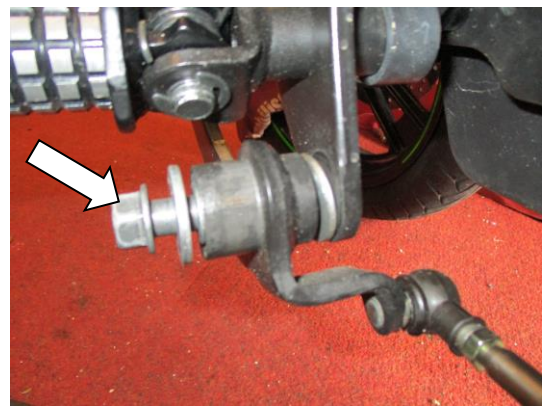


ABBILDUNG 2

R&G



HEELSH0001



ABBILDUNG 3

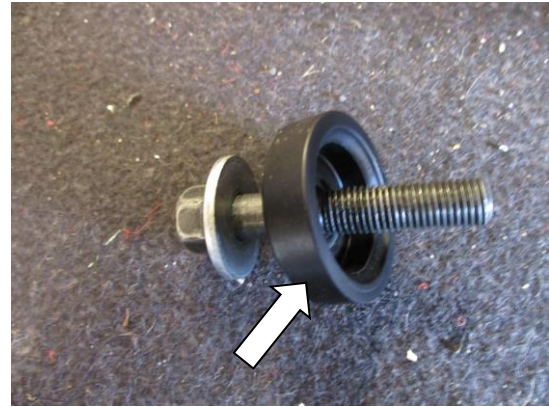


ABBILDUNG 4



ABBILDUNG 5

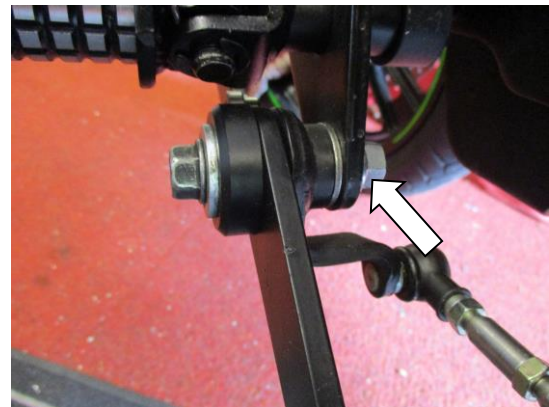


ABBILDUNG 6



ABBILDUNG 7

R&G

Unit 1 Shelleys Lane, East Worldham, Alton, Hants GU34 3AQ

Tel: +44 (0)1420 89007 Fax: +44 (0)1420 87301 www.rg-racing.com Email: info@rg-racing.com



MONTAGEANLEITUNG

- Nehmen Sie den Auftreter (Artikel 3) und die Halteplatte (Artikel 2) vom Kit. Den Auftreter (Artikel 3) an der gewünschten Montageöffnung an der Halteplatte (Artikel 2) anbringen wie in der Explosionszeichnung abgebildet. Sichern Sie den Auftreter mit einer M6 Schraube (Artikel 5) und M6 Unterlegscheibe (Artikel 4) wie in der Explosionszeichnung abgebildet. Mit dem empfohlenen Anzugsdrehmoment festziehen.

Page | 12

Linke Seite (in Fahrtrichtung)

- Entfernen Sie die Mutter, die in Abbildung 1 gekennzeichnet ist.
- Entfernen Sie die Schraube, die in Abbildung 2 markiert ist.
- Die Halteplatte (Artikel 2) über der original Halterung anbringen, sodass die Stifte an beiden Seiten der Halterung positioniert sind, wie in den Abbildungen 3 und 7 abgebildet.
- Den Distanzhalter (Artikel 1) über dem Gewindeeinsatz der Halterung positionieren, und mit der Originalschraube befestigen wie in Abbildung 4 abgebildet.
- Die Einheit am Motorrad anbringen und die Schraube befestigen wie in Abbildung 5 abgebildet (überprüfen Sie, dass der Hebel ordnungsgemäß funktioniert).
- Die original Mutter montieren und befestigen – siehe Abbildung 6.
- Ziehen Sie alle Schrauben und Muttern fest und überprüfen Sie die Funktion aller Teile bevor Sie mit dem Motorrad fahren. Eventuell müssen Sie die Hauptschraube lösen, um die ordnungsgemäße Funktion zu ermöglichen, und die Sicherungsmutter wieder festziehen.
- Bitte alle Mutter und Schrauben festziehen und die ordnungsgemäße Funktion der Teile bevor Sie mit dem Motorrad fahren.

AUSGABE 2 03/01/2017 (HH)

CONSUMER NOTICE

The catalogue description and any exhibition of samples are only broad indications of the Products and R&G may make design changes which do not diminish their performance or visual appeal and supplying them in such state shall conform to the order. The Buyer acknowledges no representation or warranty (other than as to title) has been given or will apply to the Products other than those in R&G's order or confirmation and the Buyer confirms it has chosen the Products as being of merchantable quality and suitable for its particular purposes. Where R&G fits the Products or undertakes other services it shall exercise reasonable skill and care and rectify any fault free of charge unless the workmanship has been disturbed. The Buyer is responsible for ensuring that the warranty on the motorcycle is not affected by the fitting of the Products. On return of any defective Products R&G shall at its option either supply a replacement or refund the purchase money but shall not be liable if the Products have been modified or used or maintained otherwise than in accordance with R&G's or manufacturer's instructions and good engineering practice or if the defect arises from accident or neglect. Other than identified above and subject to R&G not limiting its liability for causing death and personal injury, it shall not be liable for indirect or consequential loss and otherwise its liability shall be limited to the amounts paid by the Buyer for the Products or the fitting or service concerned. These terms do not affect the Buyer's statutory rights.

R&G RETURNS POLICY (NON-FAULTY GOODS)

Returns must be pre-authorized (if not pre-authorized the return will be rejected). Goods may only be returned direct to us if they were purchased direct from us (customer must prove if necessary). Otherwise to be returned to original vendor. Goods must be in re-sellable condition, in the opinion of R&G. All returns are subject to a 25% restocking and handling fee (25% of the gross value exc. P&P – at the prevailing price at time of purchase). The customer must pay any and all carriage charges. No returns of discontinued products, unless within 14 days of purchase. This policy does not affect your statutory rights and does not refer to faulty goods.

R&G

Unit 1 Shelleys Lane, East Worldham, Alton, Hants GU34 3AQ

Tel: +44 (0)1420 89007 Fax: +44 (0)1420 87301 www.rg-racing.com Email: info@rg-racing.com